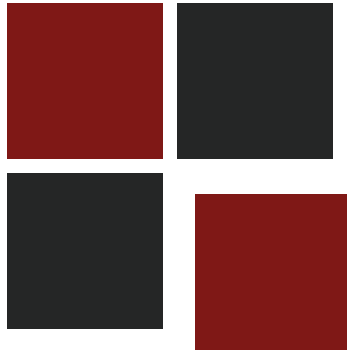


# cornerstone

## single sections



**18' and 20' Wide Homes**



Scan on your Mobile Device  
to get your Digital Brochure



[www.modulinepenticton.ca](http://www.modulinepenticton.ca)

# Cornerstone Single Sections

## Standard Features and Specifications

### GENERAL CONSTRUCTION

Built to Code	CSA Z-240 Zone 4,5	
Snow load	94psf/4.53kpa GSL 52psf/2.49kpa Design Load	
Insulation	Ceiling: R40 Walls: R22 Floor: R33	
Floor Joist	<b>18 Wide</b> 2X12	<b>19-8 Wide</b> 2X12
Decking	5/8" T&G OSB	
Roof Pitch	<b>18 Wide</b> 3/12	<b>19-8 Wide</b> 2.5/12
Roofing	Architectural Shingle	
Eaves	<b>18 Wide</b>	<b>19-8 Wide</b>
	Front 16"	16"
	Side 12" Fixed	12" Pull Out
	Rear 16"	16"
Exterior Walls	8' 2x6	
Interior Walls	2x4 Vinyl Covered Drywall Panel	
Ceiling	Textured Drywall Flat	
Siding	Maintenance Free Vinyl Lap	
Fascia	White 8" Smart Trim	
Front End	Eyebrow	
Windows	Double Low E, Argon, PVC w/Vinyl sills Screens & Security Locks Cordless Cellular Shades (excludes obscured & transoms)	
Doors	2 Panel Insulated with Dead Bolt. Peep hole at Front 36" Front 32" Rear Decorative Coach Light at all entrances (exc porch)	

### SPACIOUS BATHS

Ceramic Tile Backsplash
Vanity Mirror with Bar Light
One-Piece Fiberglass Tub/Shower with Single Lever Faucet
Power Bath Fan on Separate Switch
GFI Receptacle
Comfort Height, Dual Flush Toilet
Wall Mounted Over John Cabinet
Curved Shower Rod & Curtain (Select Plans)

### UTILITY SERVICES

Electrical Service	100 AMP
Heating	96% High Efficiency 2 stage Gas Furnace, A/C Ready
Water Heater	40 Gallon Electric
Communication Outlets	1) Master Bedroom, (1) Living Room
Smoke & CO2 Detectors per code	
Wired, Plumbed & Vented for Washer & Dryer	
Continuous Whole House Fan	
Shut Off Valves at all Sinks	
Exterior Frost Free Tap	
Exterior GFI Electrical Outlet	
Freezer Outlet (Plan Specific)	
Heat Tape Plug	

### TASTEFUL INTERIORS

Flooring	Carpet: Master Bedroom, Living Room
	Quality Cushioned Linoleum: All other areas
Designer Glass Light Fixtures	
Prefinished Interior Doors	
Single Rod with Shoe Shelf in Master Bedroom Closet	
Linen Closet (plan specific)	
Utility Room Shelf	

### BRIGHT, BEAUTIFUL KITCHENS

European Deluxe Cabinetry with Crown Moulding
Walk- In Pantry (Plan Specific)
Kitchen Island (Plan Specific)
Raised & Extended Overhead Fridge Cabinet
Raised Corner Cabinet (Plan Specific)
Ceramic Tile Backsplash
Double Stainless Steel Kitchen Sink
Chrome Single Handle Pull Out Faucet
Window over Kitchen Sink (plan specific)
Exterior Vented Range Hood with Light
Fridge Opening 36"x72"
18 cu ft, 2 Door Frost Free Refrigerator
30" Electric Range

*10 Year Warranty*

Proud To Be  
**CANADIAN!**

**FRONT PAGE**

WEDGE ROOF OPTION IS AVAILABLE ON 18' WIDES ONLY.



# EARLE

2 BDRM, 2 BATH, FRONT BDRM  
**18CO5801**

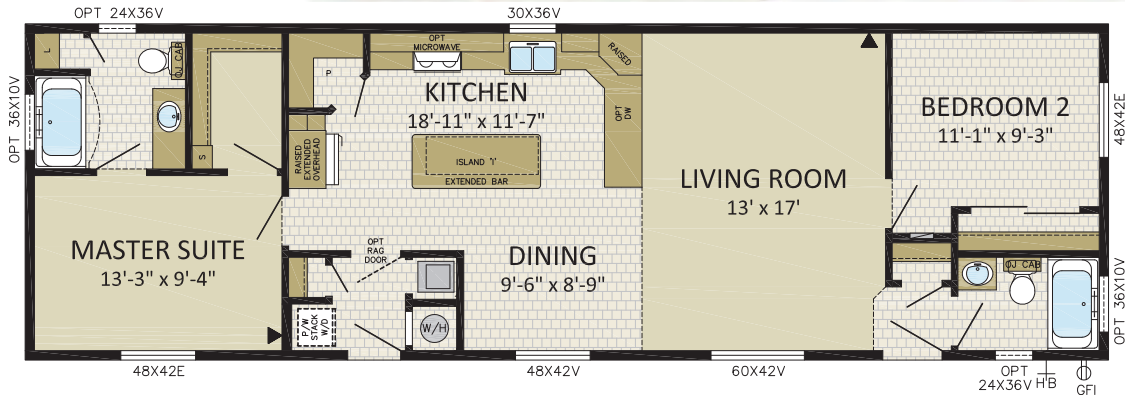
18' x 58' | 1,044 sqft

IMAGE SHOWN WITH OPTIONS:

- 14' DORMER
- LOUISBOURG FRONT DOOR
- 9-LITE REAR DOOR
- 24x36v & 36x10v BATH WINDOWS
- FIBER CEMENT SIDING



**18'**  
**WIDES**



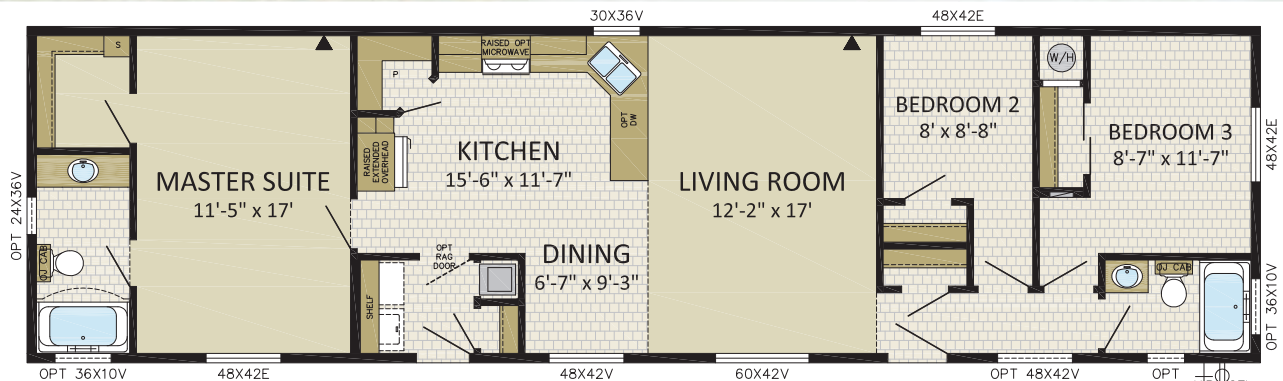
# EDGEMONT

3 BDRM, 2 BATH, FRONT BDRM  
**18CO6601**

18' x 66' | 1,188 sqft

IMAGE SHOWN WITH OPTIONS:

- Hip Roof
- VICTORIA FRONT DOOR
- 9-LITE REAR DOOR
- 24x36v & 36x10v BATH WINDOWS
- Box Bay w/FAUX Stone on Hitch End
- 48x60v WINDOW in MASTER SUITE, DINING, HALLWAY & BEDROOM 3
- 48x60v WINDOW & (2) 18x60 WINDOWS in LIVING ROOM
- CARPORT SUPPLIED & INSTALLED ON SITE BY OTHERS







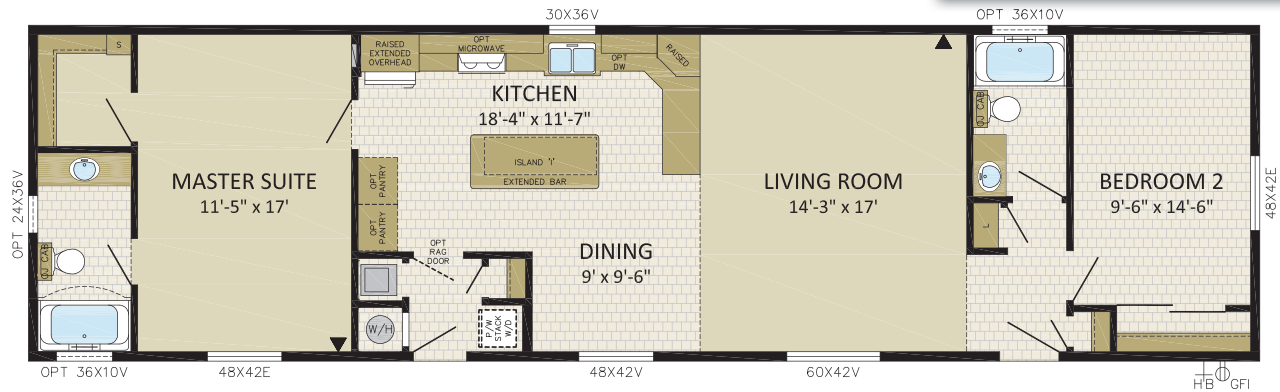
## ELDORADO

2 BDRM, 2 BATH, FRONT BDRM  
**18CO6602**

18' x 66' | 1,188 sqft

**IMAGE SHOWN WITH OPTIONS:**

- METAL WEDGE ROOF & RIPPLE COVE SIDING PACKAGE
- VICTORIA FRONT DOOR
- 9-LITE REAR DOOR
- BOX BAY W/FAUX STONE & 48x60v WINDOW
- 48x60v & 48x12 TRANSOM WINDOWS IN LR, DR & MBR



## EDINBURGH

2 BDRM, 2 BATH, FRONT LR  
**18CO6603**

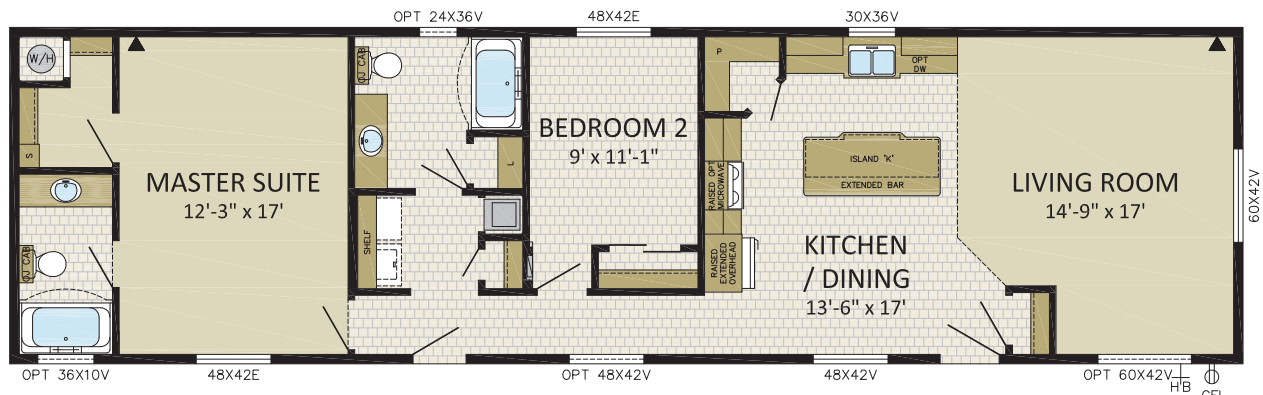
18' x 66' | 1,188 sqft

NOTE: WEDGE ROOFS NOT AVAILABLE ON 19'-8" WIDE MODELS



**IMAGE SHOWN WITH OPTIONS:**

- LOUISBOURG FRONT DOOR
- 9 LITE REAR DOOR
- 36x10v BATH WINDOWS
- FAUX STONE ACCENTS
- TRANSOM WINDOWS OVER DOORS
- METAL WEDGE ROOF & RIPPLE COVE SIDING PACKAGE
- 48x76v WOLF CREEK WINDOWS IN MASTER SUITE, HALLWAY, & DINING
- 60x76v WOLF CREEK WINDOWS IN LIVING ROOM









**20'  
WIDES**



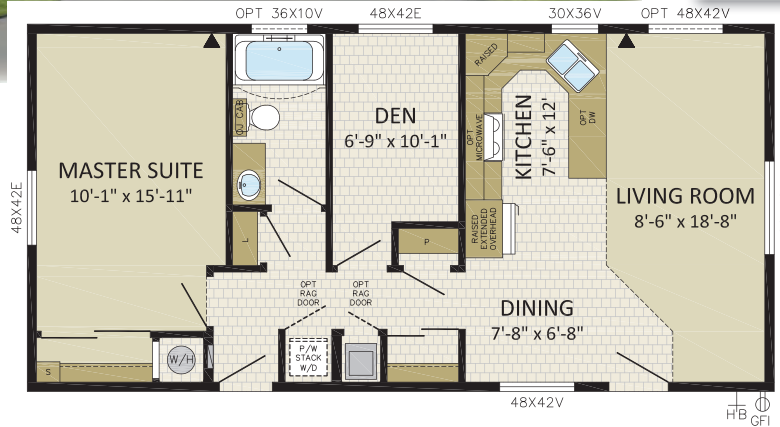
## FULTON

1 BDRM, 1 BATH, DEN FRONT LR  
**198CO4001**

19'-8" x 40' | 787 sqft

IMAGE SHOWN WITH OPTIONS:

- COLUMN "C"
- LOUISBOURG FRONT DOOR
- 9-LITE REAR DOOR
- 12' DORMER W/FIBER CEMENT SHAKES
- 60x76v WOLF CREEK WINDOW IN LR



## FAIRFIELD

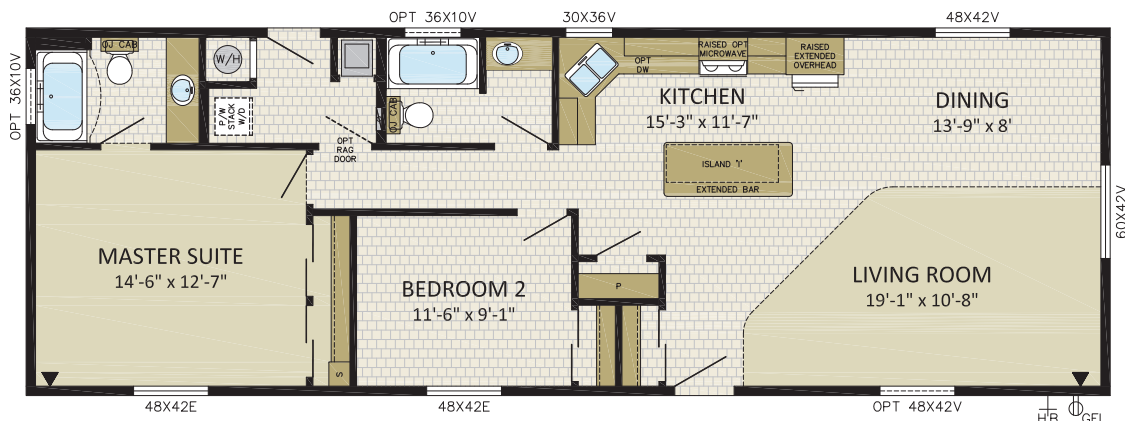
2 BDRM, 2 BATH, FRONT LR\DR  
**198CO5801**

19'-8" x 58' | 1,141 sqft



IMAGE SHOWN WITH OPTIONS:

- 3/4 STAR FRONT DOOR
- 14' DORMER
- 60x76v WOLF CREEK WINDOW IN DINING/LIVING ROOM
- RIPPLE COVE SIDING PACKAGE
- 24x76F/60x76v/24x76F WINDOWS IN LIVING ROOM





# FREMONT

2 BDRM, 2 BATH, FRONT BDRM

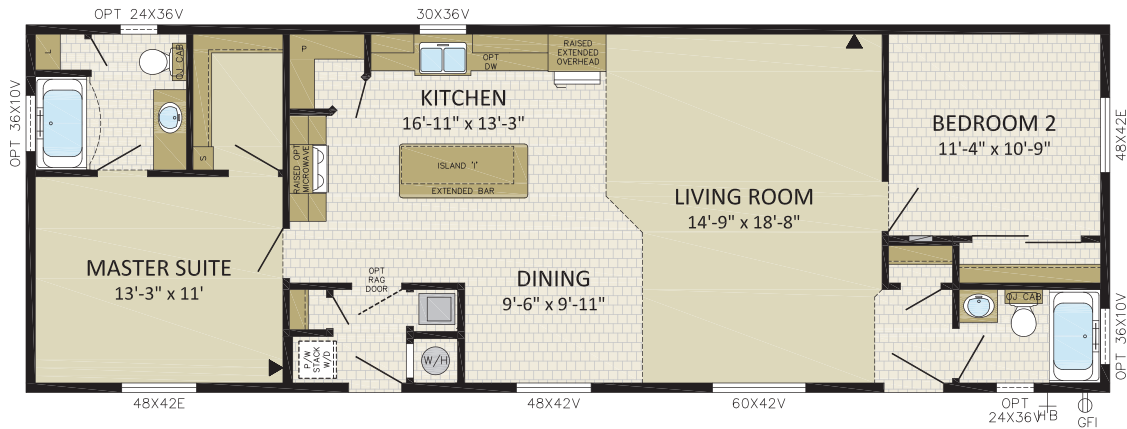
**198CO5802**

19'-8" x 58' | 1,141 sqft



IMAGE SHOWN WITH OPTIONS:

- VICTORIA FRONT DOOR
- 9-LITE REAR DOOR
- 14' DORMER W/FAUX STONE
- 60x60v IN LIVING ROOM
- BOX BAY ON HITCH END W/FAUX STONE
- 24x36v & 36x10v BATH WINDOWS



# FAIRVIEW

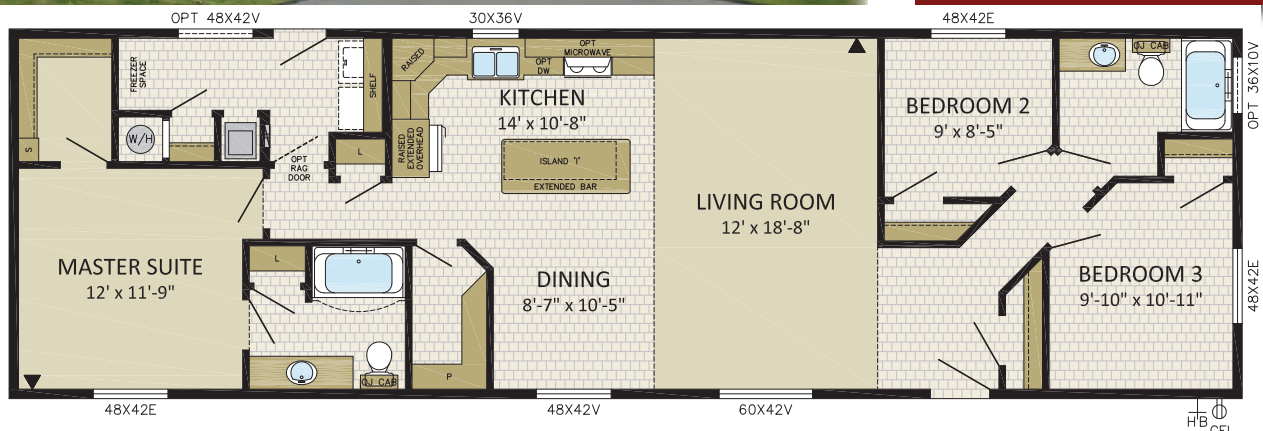
3 BDRM, 2 BATH, FRONT BDRM

**198CO6601**

19'-8" x 66' | 1,298 sqft

IMAGE SHOWN WITH OPTIONS:

- BOX BAY & HIP ROOF W/FIBER CEMENT SHAKES ON HITCHEND
- 9-LITE FRONT DOOR
- 48x60v WINDOWS IN LR, DR, BR, & MS
- 18' DOUBLE DORMER W/CEMENT SHAKES
- 36x10v BATH WINDOW





# FORESTBROOK

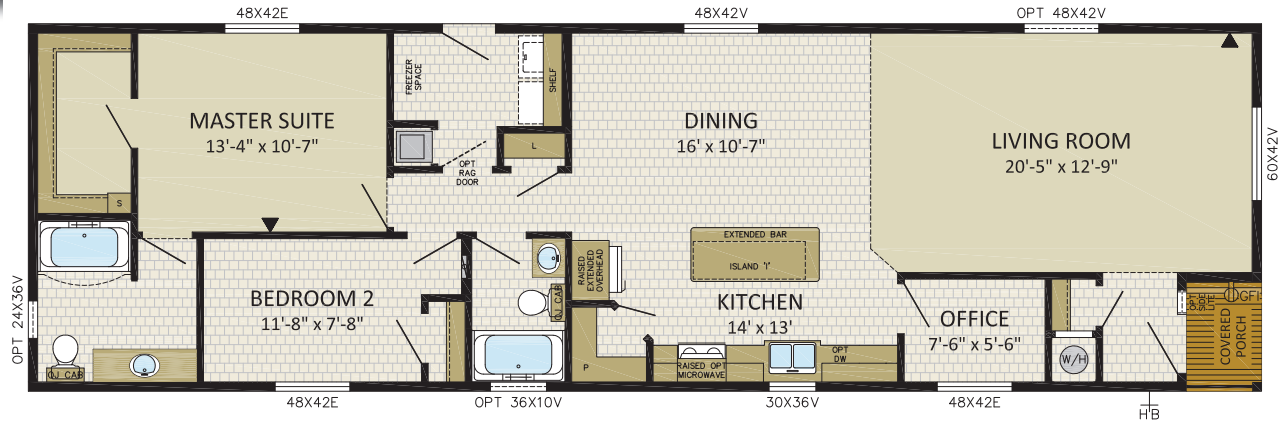
2 BDRM, 2 BATH, OFFICE, FRONT LR

**198CO6603**

19'-8" x 66' | 1,298 sqft

IMAGE SHOWN WITH OPTIONS:

- 9-LITE FRONT DOOR
- 48x76v WINDOW IN OFFICE
- 16' DORMER W/VERTICAL METAL SIDING
- 36x10v BATH WINDOW
- 2x 30x76v WINDOWS IN LR W/VERTICAL METAL SIDING
- PAINTED PORCH POSTS



# FAIRCREST

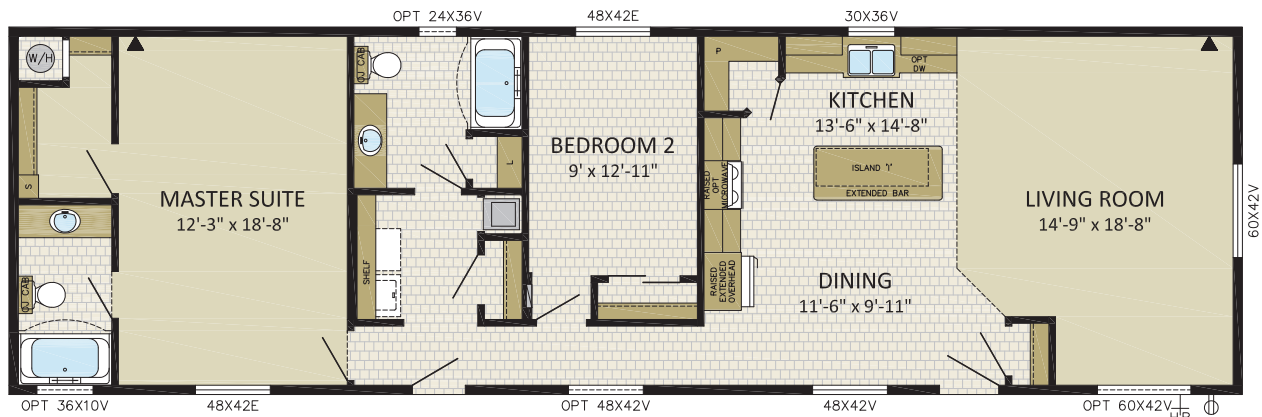
2 BDRM, 2 BATH, FRONT LR

**198CO6604**

19'-8" x 66' | 1,298 sqft

IMAGE SHOWN WITH OPTIONS:

- 8' PORCH W/ PAINTED POSTS
- 9-LITE FRONT & REAR DOORS
- 36x10v BATHROOM WINDOW
- 14' DORMER W/VERTICAL METAL SIDING
- PATIO DOOR W/2x 24x60v WINDOWS IN LIVING ROOM
- 60x42v WINDOW IN LIVING ROOM & 48x42v WINDOW IN HALLWAY







# FRAZIER

2 BDRM, 2 BATH, DEN

**198CO6605**

19'-8" x 66' | 1,298 sqft

IMAGE SHOWN WITH OPTIONS:

- LOUISBOURG FRONT DOOR
- 9-LITE REAR DOOR
- BOX BAY W/FAUX STONE ON HITCHEND
- 14' DORMER W/ FAUXSTONE
- 48X60V WINDOWS IN LR & DEN
- 24X36V & 36X10V WINDOWS IN BATHS
- RIPPLE COVE SIDING PACKAGE



# FAIRHAVEN

3 BDRM, 2 BATH, FRONT LR

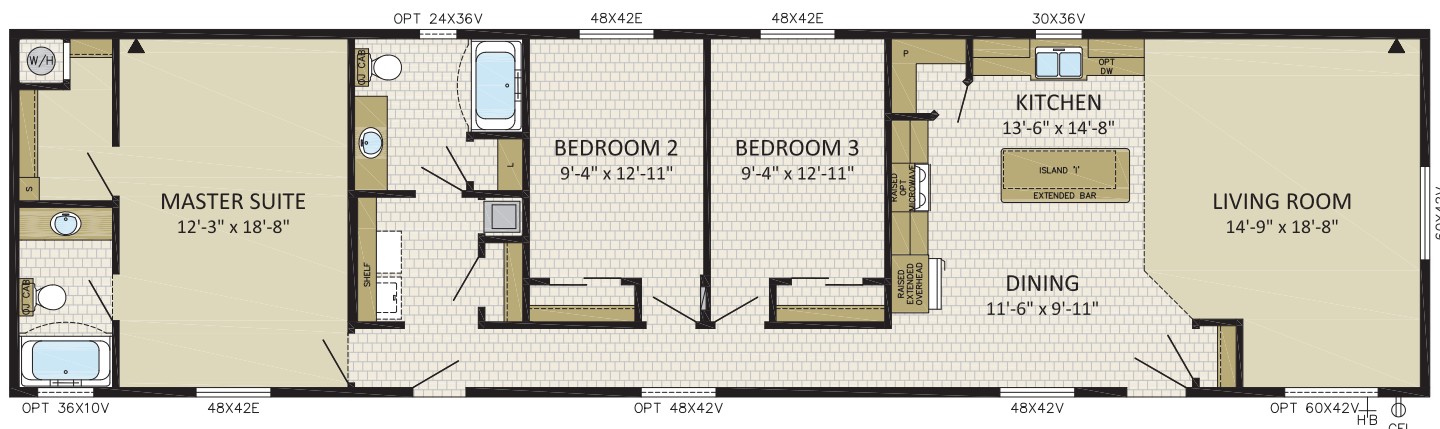
**198CO7601**

19'-8" x 76' | 1,495 sqft



IMAGE SHOWN WITH OPTIONS:

- VICTORIA FRONT DOOR
- 9-LITE REAR DOOR
- 60X76V WINDOWS IN LR & DR
- 36X10V WINDOW IN BATH
- 18' DORMER W/FIBER CEMENT SHAKES & HALF FAUX STONE
- HIP ROOF W/FIBER CEMENT SHAKES & HALF FAUX STONE
- 48X42V WINDOW IN HALLWAY





# FENWICK

4 BDRM, 2 BATH

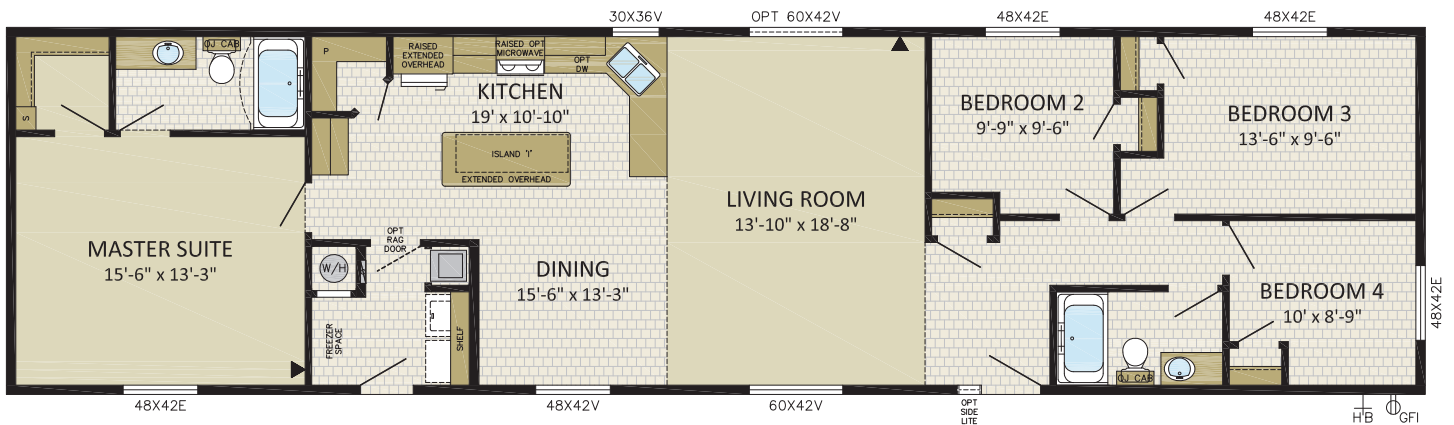
**198CO7602**

19'-8" x 76' | 1,495 sqft



IMAGE SHOWN WITH OPTIONS:

- VICTORIA FRONT DOOR W/SIDELITE
- 9-LITE REAR DOOR
- RIPPLE COVE SIDING PACKAGE
- 18' DOUBLE DORMER W/FIBER CEMENT SHAKES
- BOX BAY W/FIBER CEMENT SHAKES ON HITCHEND



# FAIRWOOD

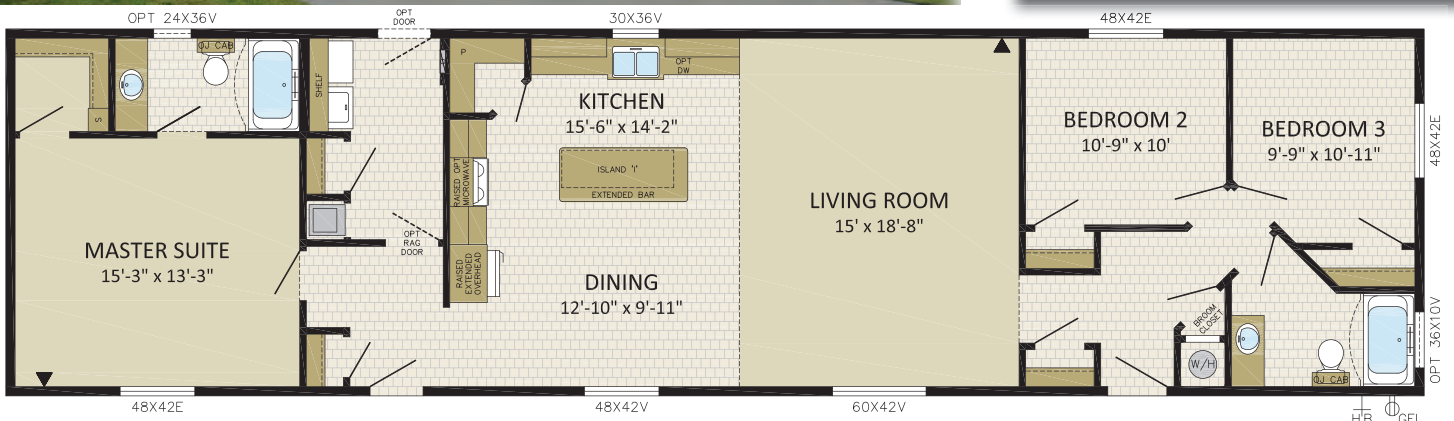
3 BDRM, 2 BATH

**198CO7603**

19'-8" x 76' | 1,495 sqft

IMAGE SHOWN WITH OPTIONS:

- VICTORIA FRONT & 9-LITE REAR DOORS
- 16' DORMER W/FIBER CEMENT SHAKES
- 36x10v BATH WINDOW
- HIP ROOF W/FIBER CEMENT SHAKES
- 60x60v LIVING ROOM WINDOW
- CARPORT SUPPLIED & INSTALLED ONSITE BY OTHERS





# CUSTOM

2 BDRM, 2 BATH, ENTRY PORCH  
19'-8" x 66' | 1,298 sqft



## IMAGE SHOWN WITH OPTIONS:

- 8' PORCH W/GABLE
- LOUISBOURG FRONT DOOR
- 9-LITE REAR DOOR
- WOLF CREEK 48x76V IN LR, SMART TRIM ON WINDOWS
- CARPORT SUPPLIED & INSTALLED BY OTHERS ONSITE



## Photo Shows:

- Brioso Tub
- Barnboard accent wall paneling
- 42x10 Crossreed windows in Box Bay



## Photo Shows:

- 4' Halo Shower
- Chrome Rain Showerhead & Hand Held Showerhead
- Utile Shower Panels





[www.modulinepenticton.ca](http://www.modulinepenticton.ca)



a proud supporter of  
Ronald McDonald House

Authorized Dealer:

1175 Railway Street  
Penticton, BC  
V2A 5X5

P:250-493-0122  
F:250-493-0133

4/23

#### DISCLAIMER:

Due to continuous product development and improvement, prices, specifications, and materials are subject to change without notice or obligation. Square footage and other dimensions are approximate. Included images are artist renderings and are not intended to be an accurate representation of the home. Renderings and floorplans may be shown with optional features or third-party additions.