

cornerstone

triple sections



Scan on your Mobile Device
to get your Digital Brochure



www.modulinepenticton.ca



Cornerstone Triple Section

Standard Features and Specifications

GENERAL CONSTRUCTION			
Built to Code	CSA A-277 Zone 4,5,6		
Snow load	94psf/4.53kpa GSL 52psf/2.49kpa Design Load		
Insulation	Ceiling: R52 Walls: R22 Floor: R33 (Deleted with Foundation/Basement Option)		
Floor	Engineered Truss @ 19.2 O.C		
Decking	5/8" T&G OSB		
Roof Pitch	4/12		
Roofing	Architectural Shingle		
Eaves	Front 16"	Side 12" or 16" Fixed plan specific	Rear 16"
Exterior Walls	8' 2x6		
Interior Walls	2x4 Vinyl Covered Drywall Panel		
Ceiling	Textured Drywall Flat Throughout		
Siding	Maintenance Free Vinyl Lap		
Fascia	White 8" Smart Trim		
Windows	Double Low E, Argon, PVC w/ Vinyl sills. Cordless Cellular Shades (excludes obscured & transoms)		
Doors	2 Panel Insulated with Dead Bolt. Peep Hole at Front Decorative Coach Light at all entrances (exc porch) 36" Front 32" Rear		
Porch	Covered with Gable Roof (plan specific) & Pot Light(s)		

SPACIOUS BATHS	
Ceramic Tile Backsplash	
Vanity Mirror with Bar Light	
One-Piece Fiberglass Tub/Shower with Single Lever Faucet	
Power Bath Fan on Separate Switch	
GFI Receptacle	
Comfort Height, Dual Flush Toilet	
Wall Mounted Over John Cabinet	
Shower Rod & Curtain	

UTILITY SERVICES	
Electrical Service	100 AMP
Heating	96% High Efficiency 2 stage Gas Furnace, A/C Ready
Water Heater	40 Gallon Electric
Communication Outlets	(1) Master Bedroom, (1) Living
Smoke & CO2 Detectors per code	
Wired, Plumbed & Vented for Washer & Dryer	
Continuous Whole House Fan	
Shut Off Valves at all Sinks	
Exterior Frost Free Tap	
Exterior GFI Electrical Outlet	

TASTEFUL INTERIORS	
Flooring	Carpet: Master Bedroom, Living, Hall Quality Cushioned Linoleum: All other areas
Designer Glass Light Fixtures	
Prefinished Interior Doors	
Double Rod in Master Bedroom Closet	
Utility Room Shelf	
Linen Closet (plan specific)	

BRIGHT, BEAUTIFUL KITCHENS	
European Deluxe Cabinetry	
Kitchen Island (plan specific)	
Corner Walk-In Pantry	
Raised Fridge & Corner Cabinets (plan specific)	
Ceramic Tile Backsplash	
Double Stainless Steel Kitchen Sink	
Chrome Single Handle Pull Out Faucet	
Window over Kitchen Sink (plan specific)	
Exterior Vented Range Hood with Light	
Fridge Opening 36x72"	
18 cu ft, 2 Door Frost Free Refrigerator	
30" Electric Range	

10 Year Warranty

RUBEN
3 BDRMS, 2 BATHS
40CO3601
36' x 36' | 1,296 sqft

40CO3601

36' x 36' | 1,296 sqft

IMAGE SHOWN WITH OPTIONS:

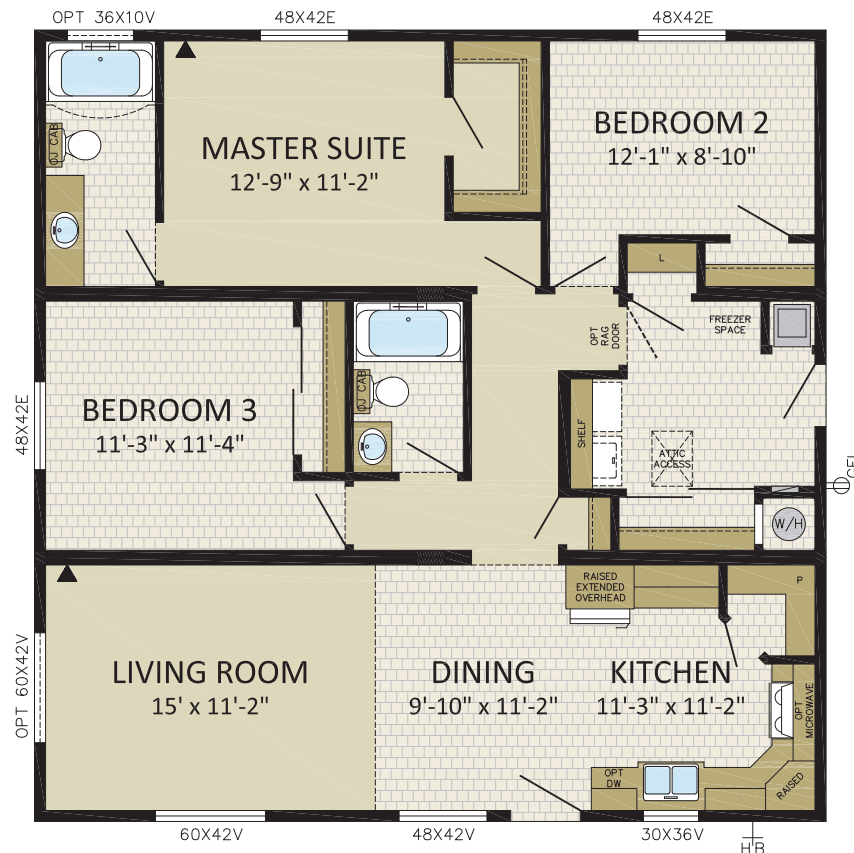
- 3/4 STAR LITE FRONT DOOR
- 48x76v WOLF CREEK WINDOWS IN LR & DR
- FIBER CEMENT SIDING W/ FAUX STONE
- 20' DORMER WITH WEB
- GARAGE BY OTHERS

- 48x76v WOLF CREEK WINDOWS IN LR & DR

- FIBER CEMENT SIDING W/ FAUX STONE

- 20' DORMER WITH WEB

- GARAGE BY OTHERS



RADFORD

2 BDRMS, 2 BATHS, DEN

40CO4001

37' 6" x 36' | 1,452 sqft



Rear View



IMAGES SHOWN WITH OPTIONS:

- LOUISBOURG FRONT DOOR & SIDE LITE
- 60x76v WOLF CREEK WINDOWS IN BEDROOM 2
- FIBER CEMENT SIDING
- 8' COVERED PORCH W/HIP ROOF & PATIO DOORS
- GARAGE BY OTHERS



ROWAN

2 BDRMS, 2 BATHS, COVERED PORCH

40CO4201

36' x 42'/40' | 1,464 sqft

IMAGE SHOWN WITH OPTIONS:

- FRENCH FRONT DOOR W/SIDE LITE
- (3x) 48x60v WINDOWS IN MASTER SUITE & 1 IN BEDROOM 2
- HORIZON FIBER CEMENT PACKAGE
- 30x60E WINDOWS IN BEDROOM2 & MASTER SUITE
- 36x10v BATHROOM WINDOW
- OPTIONAL 6/12 ROOF PITCH WITH 18' DORMER
- GARAGE BY OTHERS



REECE

3 BDRMS, 2 BATHS

40CO4801

40' 6" x 48'/44' | 1,890 sqft

IMAGE SHOWN WITH OPTIONS:

- FRENCH FRONT DOOR
- (2x) 10' GABLES/BOX BAYS W/FIBER CEMENT SHAKES & 60x76v
- WOLF CREEK WINDOWS IN LIVING ROOM & MASTER SUITE
- 60x42v WINDOW IN LIVING ROOM & GATHERING ROOM
- 24x36v BATHROOM WINDOW
- FIBER CEMENT SIDING
- DECK, PERGOLA & HOT TUB BY OTHERS



RAINIER

3 BDRMS, 2 BATHS, COVERED PORCH

40CO4901

39' 8" x 49' | 1,944 sqft

IMAGE SHOWN WITH OPTIONS:

- 3/4 STAR LITE FRONT DOOR W/SIDE LITE
- RIPPLE COVE SIDING PACKAGE
- OPTIONAL 6/12 ROOF PITCH WITH WEB IN GABLE
- OPTIONAL HIP ROOF ILO GABLE FOR PORCH
- GARAGE BY OTHERS



RAMONA

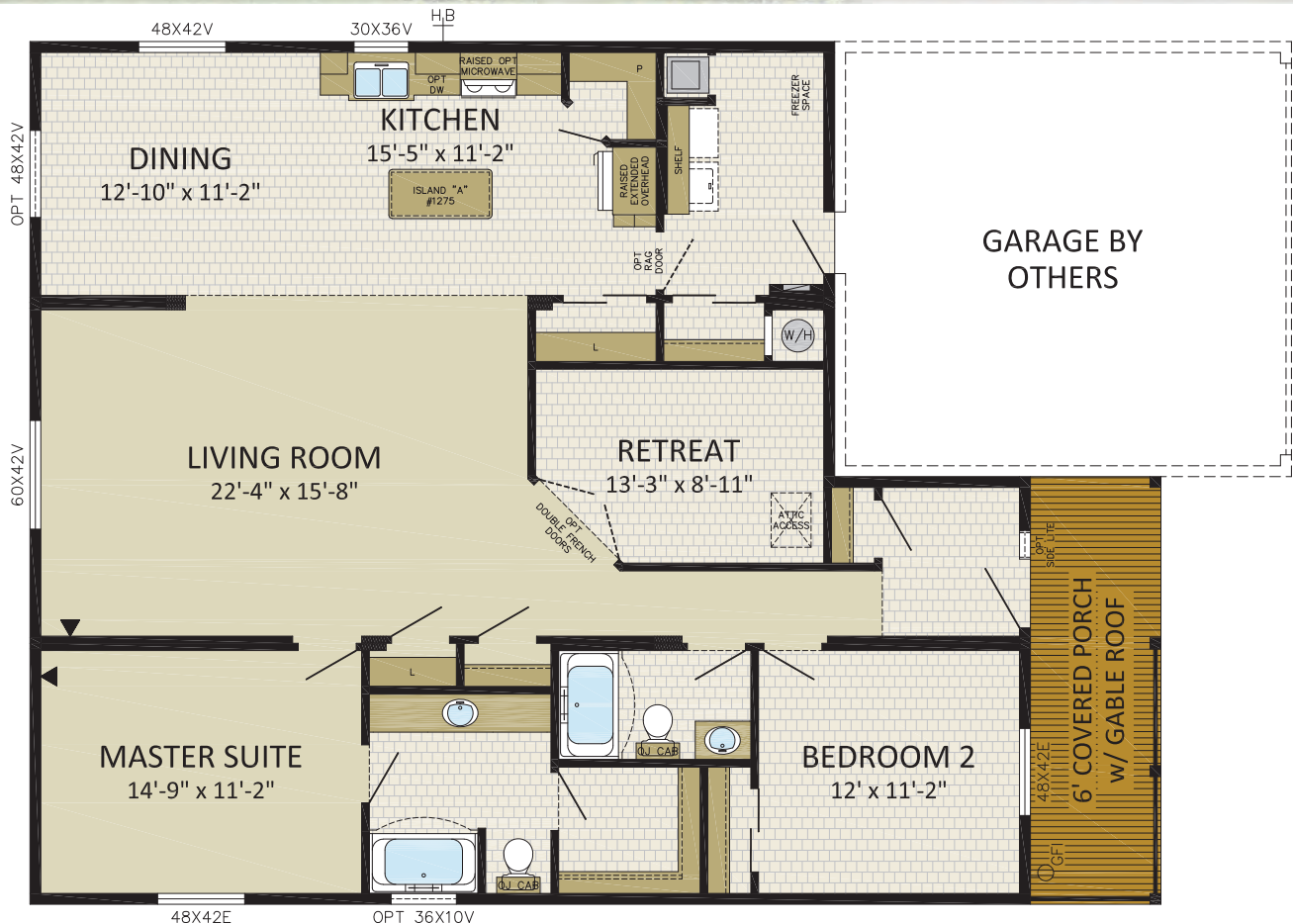
2 BDRMS, 2 BATHS, DEN, COVERED PORCH

40CO5001

39' 8" x 37' 52" | 1,763 sqft

IMAGE SHOWN WITH OPTIONS:

- LOUISBOURG FRONT DOOR & SIDE LITES
- 10' BOX BAY W/VERTICAL CORRUGATED METAL SIDING & (2x) 36x60v WINDOWS IN BEDROOM2
- FIBER CEMENT SIDING
- OPTIONAL 5/12 ROOF PITCH
- OPTIONAL HIP ROOF FOR PORCH ILO GABLE
- GARAGE BY OTHERS



3 BDRMS, 2 BATHS, DEN, COVERED PORCH
40C05002
39' x 50'/46'/27' | 1,620 sqft

- IMAGE SHOWN WITH OPTIONS:**
- **3/4 STAR LITE FRONT DOOR & SIDE LITE**
 - **48x76v WOLF CREEK WINDOWS IN BEDROOM3 & UTILITY ROOM**
 - **60x42v WINDOW IN LIVING ROOM**
 - **FIBER CEMENT SIDING W/FAUX STONE**
 - **FIBER CEMENT SHAKES IN GABLES**



39' 8" x 39'/52' | 1,770 sqft

- FRENCH FRONT DOOR & SIDE LITES
- 60x76v WOLF CREEK WINDOW IN BEDROOM2
- FIBER CEMENT SIDING
- FIBER CEMENT SHAKES IN GABLES & WEBS
- OPTIONAL 6/12 ROOF PITCH
- OPTIONAL HIP ROOF FOR PORCH ILO GABLE
- GARAGE BY OTHERS



REDUCED COSTS

Fewer subcontractors means fewer headaches and reduces your on-site supervision costs, as well as often overlooked costs, such as waste removal and insurance costs.



REDUCED RISK

Modular construction uses the same quality materials as site-built structures, but since 80% of the structure is built and inspected off-site, the amount of time required for on-site construction is dramatically reduced. Less construction on-site reduces the chance of weather delays, material damage and mold contamination. Security issues related to theft are also reduced.

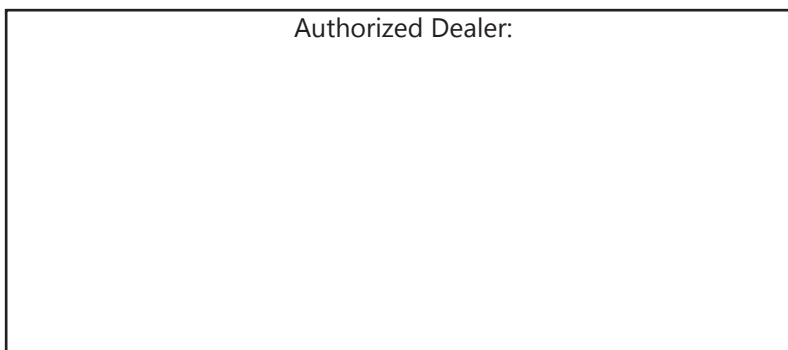
BUILD GREEN

Modular construction earns points from most major Green accrediting agencies for use of recycled materials, tight building envelopes, waste reduction, and innovative building practice.



www.modulinepenticton.ca

Authorized Dealer:



a proud supporter of
Ronald McDonald House



1175 Railway Street
Penticton, BC
V2A 5X5

P:250-493-0122
F:250-493-0133

DISCLAIMER:

Due to continuous product development and improvement, prices, specifications, and materials are subject to change without notice or obligation. Square footage and other dimensions are approximate. Included images are artist renderings and are not intended to be an accurate representation of the home. Renderings and floorplans may be shown with optional features or third-party additions. 4/23